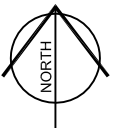


**LEGEND**

-  Approximate Location of Property



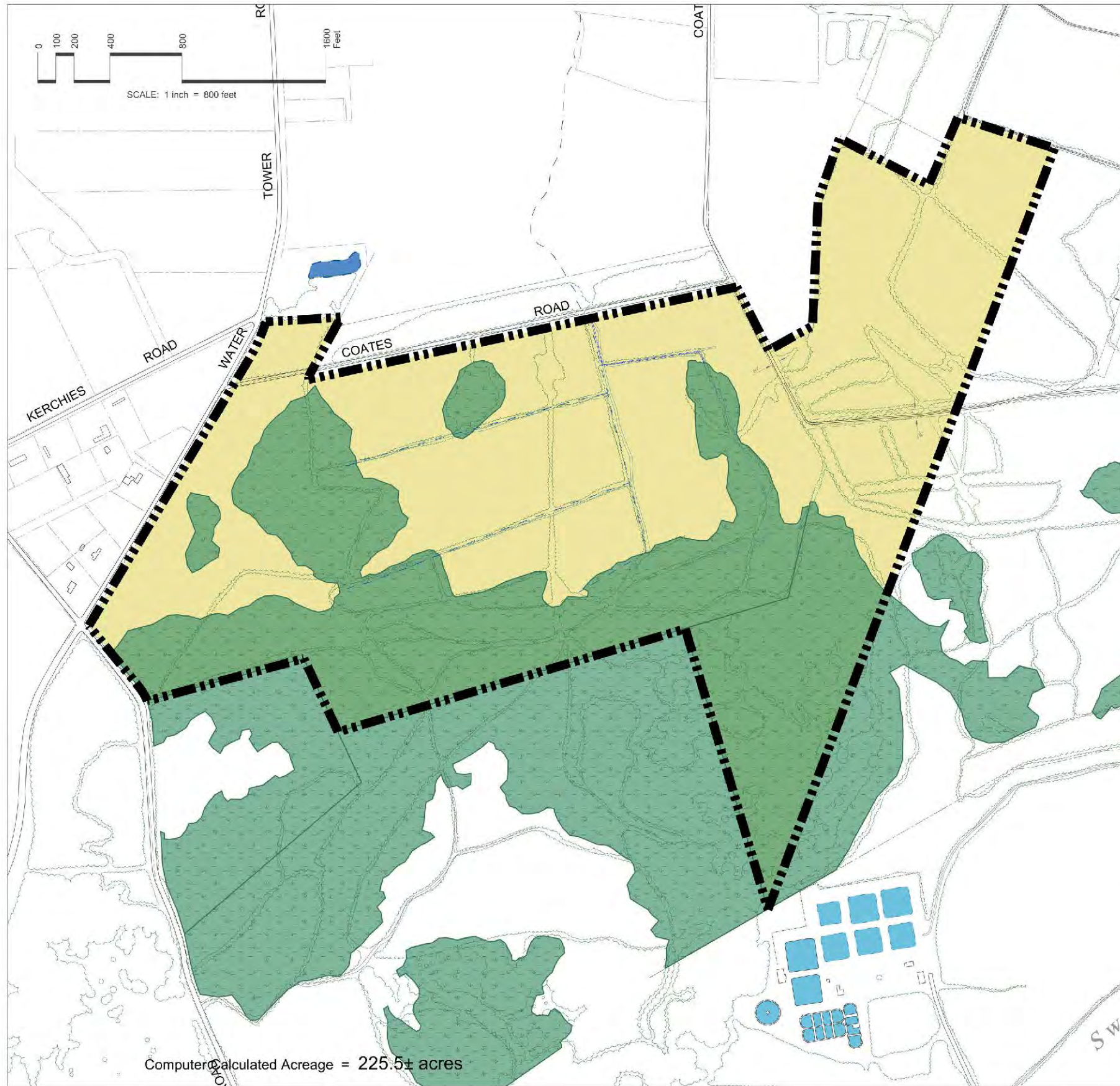
**OCEAN GROVE RESORT**

Horry County,  
South Carolina

**LOCATION MAP**









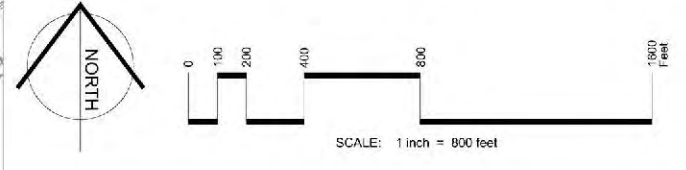
Computer Calculated Acreage = 225.5± acres

**LEGEND:**

-  Subject Property - 225.5± acres
-  Wetlands

**NOTES:**

1. Property boundaries from DDC Engineers, Myrtle Beach, SC; dated May 6, 2016.
2. Aerial Photography from Apollo Mapping; dated January 18, 2016.
3. Topography from DEM - 2foot contour intervals.
4. Soils information from USDA - NRCS National Soil Information System (NASIS) Database.
5. Wetland delineation from Jurisdictional Wetlands.
6. Floodplain information - Zone X per FEMA Map Panels 45051C0580J & 45041C0578H.

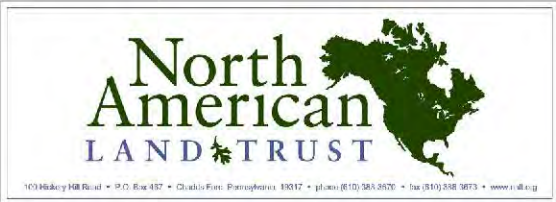


BASE MAP

**OCEAN GROVE RESORT**  
HORRY COUNTY, SOUTH CAROLINA

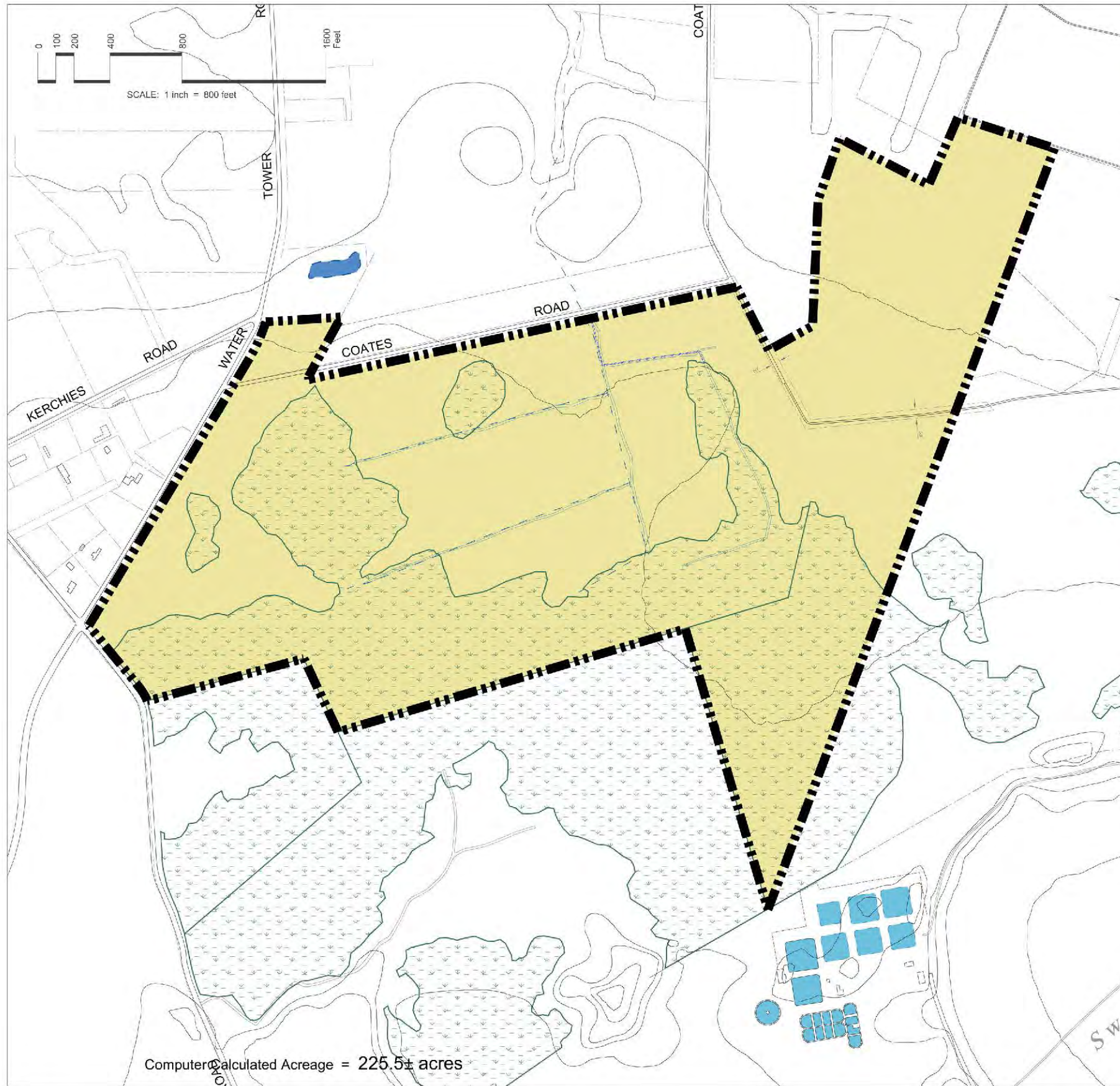
**BASE MAP**

DATE: MAY 6, 2016  
PROJECT: O.G.R. BASE MAP  
SCALE: 1" = 800'


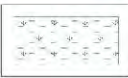


103 Highway 98 Road • P.O. Box 487 • Charles Fort, Pennsylvania 15017 • phone (610) 384-3670 • fax (610) 388-3673 • www.natl.org



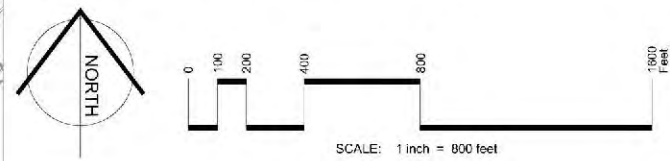


**LEGEND:**

-  Subject Property - 225.5± acres
-  Wetlands

**NOTES:**

1. Property boundaries from DDC Engineers, Myrtle Beach, SC; dated May 6, 2016.
2. Aerial Photography from Apollo Mapping; dated January 18, 2016.
3. Topography from DEM - 2foot contour intervals.
4. Soils information from USDA - NRCS National Soil Information System (NASIS) Database.
5. Wetland delineation from Jurisdictional Wetlands.
6. Floodplain information - Zone X per FEMA Map Panels 45051C0580J & 45041C0578H.



Computer Calculated Acreage = 225.5± acres

**OCEAN GROVE RESORT**

HORRY COUNTY, SOUTH CAROLINA

**TOPOGRAPHY**

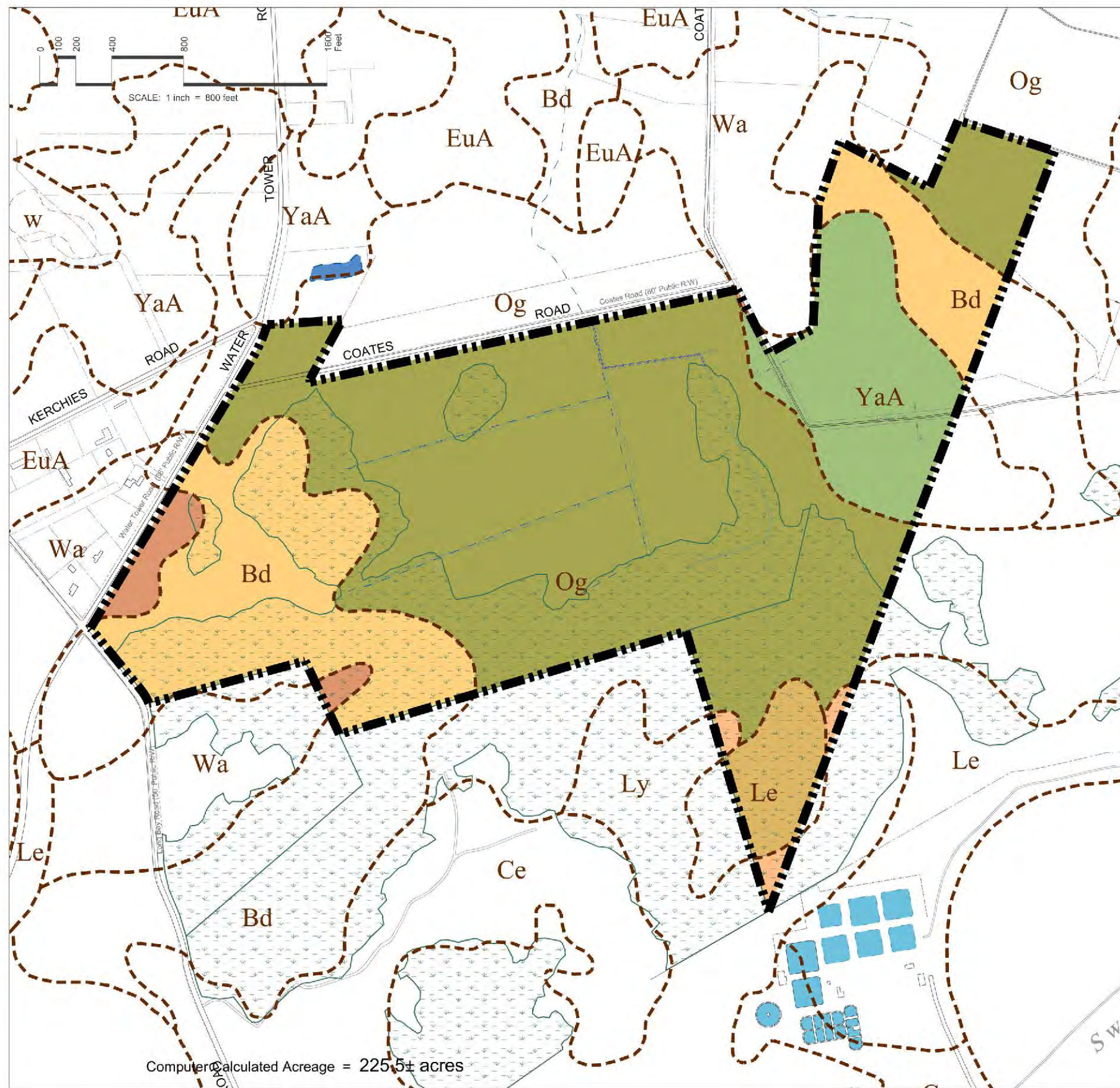
DATE: 05/11/2016 10:00 AM  
 PROJECT: 12.2.2016-100  
 SCALE: 1" = 800' NAD



103 Highway 98 Road • P.O. Box 437 • Charles Fort, Pennsylvania 15017 • phone (810) 384-2670 • fax (810) 338-3873 • www.natl.org



TOPOGRAPHY





Computer Calculated Acreage = 225.5± acres

**LEGEND:**

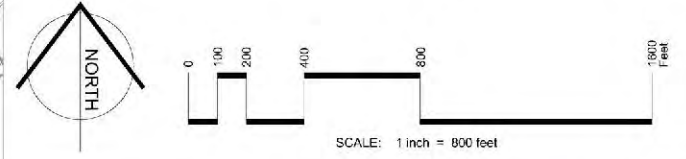
-  Subject Property - 225.5± acres
-  Wetlands

**SOIL LEGEND:**

-  **Bd** Bladen Fine Sandy Loam \*\* ^
-  **Le** Leon Fine Sand ^
-  **Ly** Lynn Haven Sand ^
-  **Og** Ogeechee Loamy Fine Sand \*\* ^
-  **Wa** Wahee Fine Sandy Loam \*\* ^
-  **YaA** Yauhannah Fine Sandy Loam \*\*\* ^  
0 to 2% slopes

Soil Notes:  
 \*\*\* denotes Prime Farmland  
 \*\* denotes Farmland of Statewide Importance  
 ^ denotes Hydric Soils

- NOTES:**
1. Property boundaries from DDC Engineers, Myrtle Beach, SC; dated May 6, 2016.
  2. Aerial Photography from Apollo Mapping; dated January 18, 2016.
  3. Topography from DEM - 2foot contour intervals.
  4. Soils information from USDA - NRCS National Soil Information System (NASIS) Database.
  5. Wetland delineation from Jurisdictional Wetlands.
  6. Floodplain information - Zone X per FEMA Map Panels 45051C0580J & 45041C0578H.

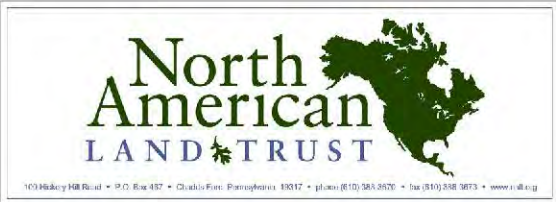


SOILS MAP

**OCEAN GROVE RESORT**  
 Horry County, South Carolina

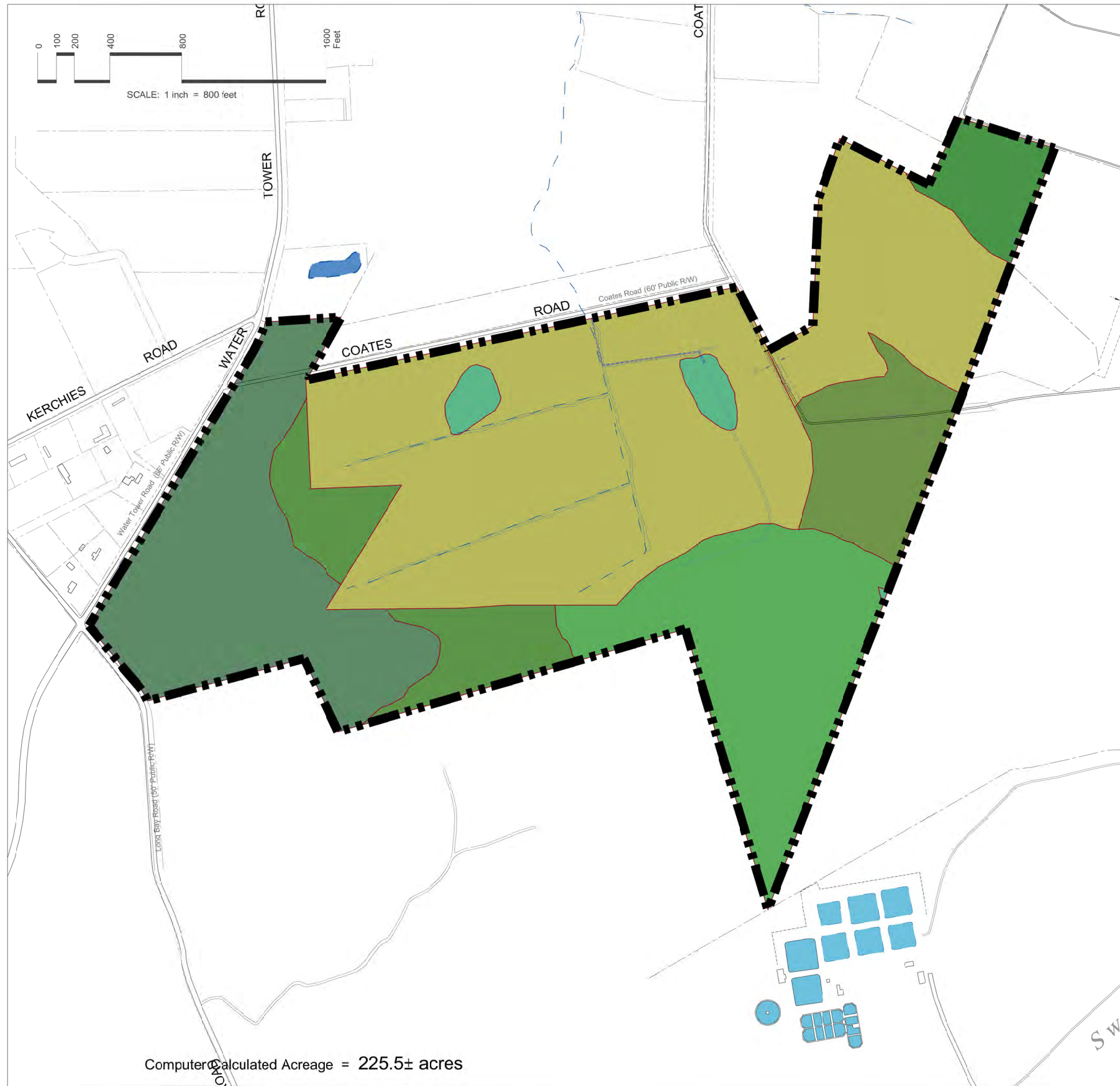
**SOILS MAP**

DATE MAP: 5.22.20  
 PROJECT: 12.22.16  
 SCALE: 1" = 800'



103 Highway 98 Road • P.O. Box 487 • Chabolo, Florida 32617 • phone (810) 384-3670 • fax (810) 338-3673 • www.natl.org





**LEGEND:**

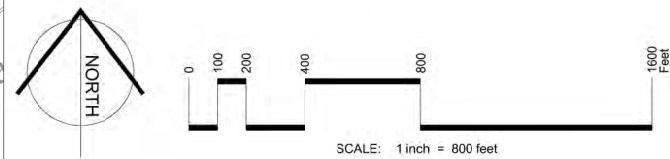
Subject Property - 225.5± acres

**VEGETATION LEGEND:**

- Bay Forest (Rhododendron viscosum) component
- Depressional Wetland
- Hardwood Pine Mix
- Mature Pine Plantation
- Pine Plantation
- Recent Cut Over Pineland
- Young Dense Pine

**NOTES:**

1. Property boundaries from DDC Engineers, Myrtle Beach, SC; dated May 6, 2016.
2. Aerial Photography from Apollo Mapping; dated January 18, 2016.
3. Topography from DEM - 2foot contour intervals.
4. Soils information from USDA - NRCS National Soil Information System (NASIS) Database.
5. Wetland delineation from Jurisdictional Wetlands.
6. Floodplain information - Zone X per FEMA Map Panels 45051C0580J & 45041C0578H.



**OCEAN GROVE RESORT**

HORRY COUNTY, SOUTH CAROLINA

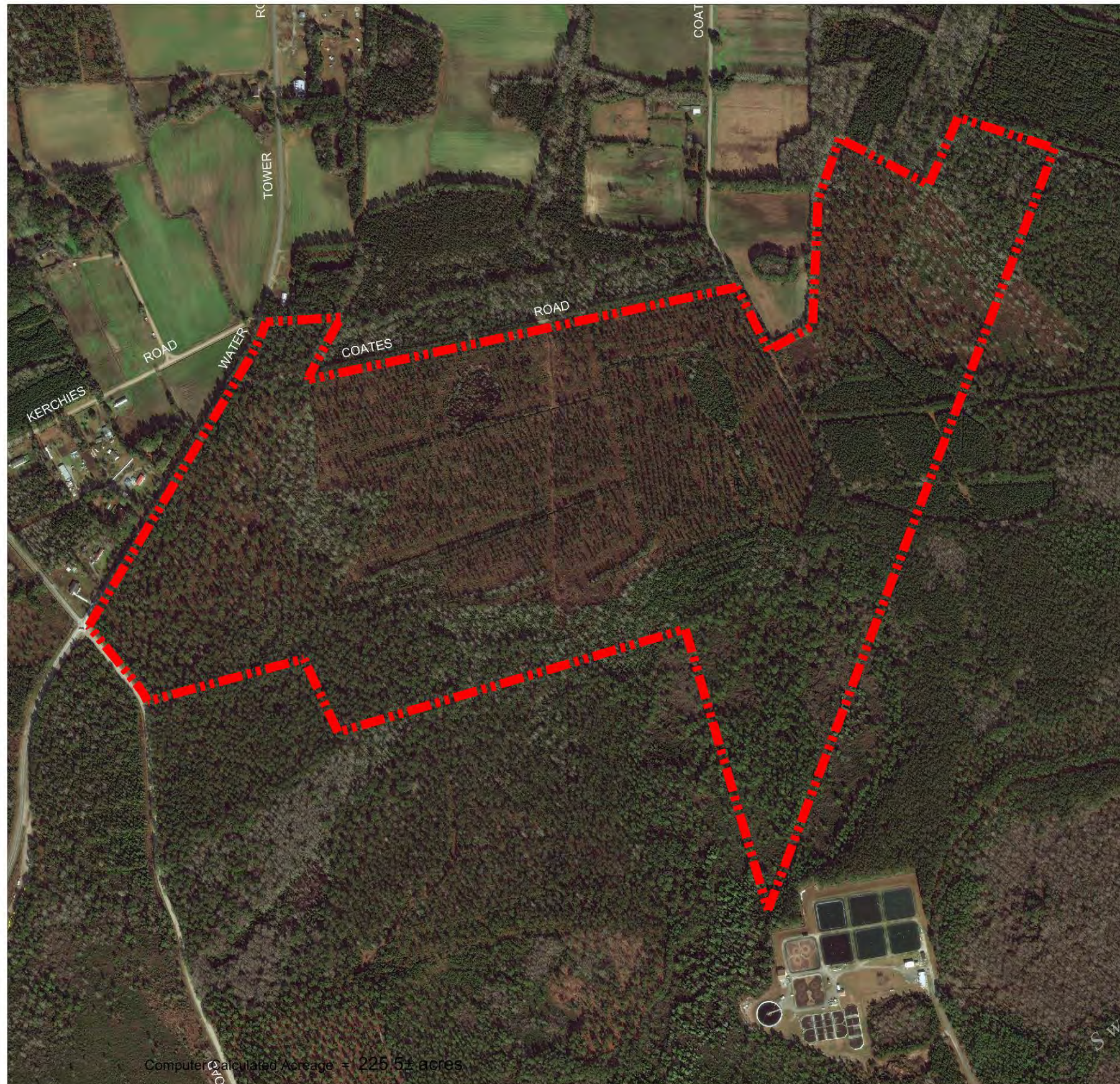
**VEGETATION MAP**

BASE MAP: PL12, 2014 .JPG  
 PRINTED: 11.2.2014 .JPG  
 BASE MAP: 51.7.2014 .JPG  
 VES. MAP: 7.14.2014 .JPG




1160 Hickory Hill Road • P.O. Box 467 • Chadds Ford, Pennsylvania 19317 • phone (610) 386-3670 • fax (610) 386-3673 • www.natl.org



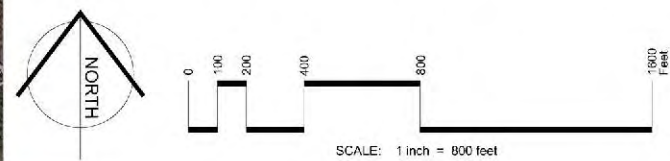


LEGEND:

 Subject Property - 225.5± acres

NOTES:

1. Property boundaries from DDC Engineers, Myrtle Beach, SC; dated May 6, 2016.
2. Aerial Photography from Apollo Mapping; dated January 18, 2016.
3. Topography from DEM - 2foot contour intervals.
4. Soils information from USDA - NRCS National Soil Information System (NASIS) Database.
5. Wetland delineation from Jurisdictional Wetlands.
6. Floodplain information - Zone X per FEMA Map Panels 45051C0580J & 45041C0578H.



# OCEAN GROVE RESORT

HORRY COUNTY, SOUTH CAROLINA

## AERIAL PHOTOGRAPH

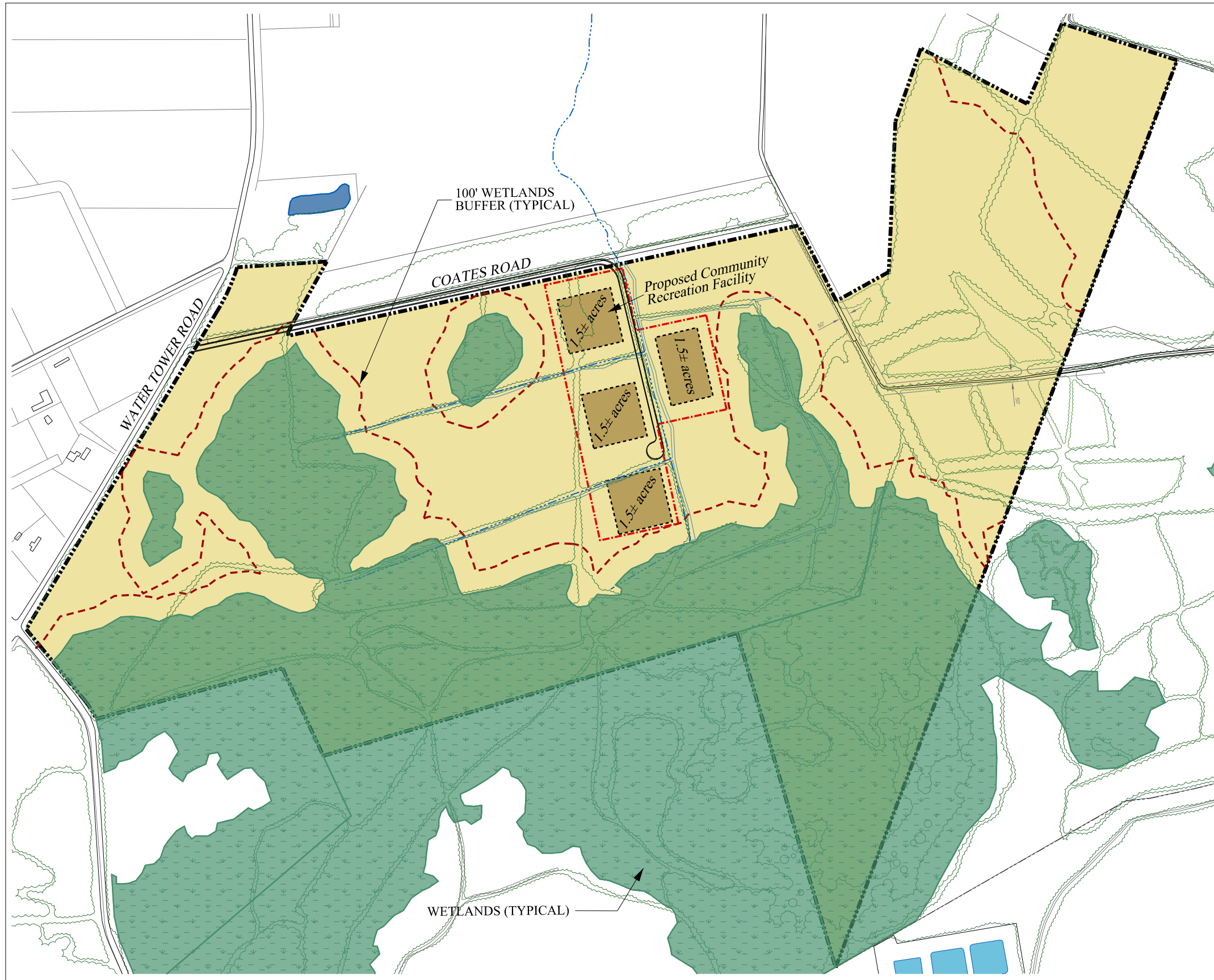
DATE: 05/11/2016  
 TIME: 12:22:00 PM  
 USER: JAC



103 Highway Hill Road • P.O. Box 487 • Chubb's Cove, Pennsylvania 19017 • phone (610) 384-9870 • fax (610) 338-3873 • www.natl.org

AERIAL PHOTOGRAPH








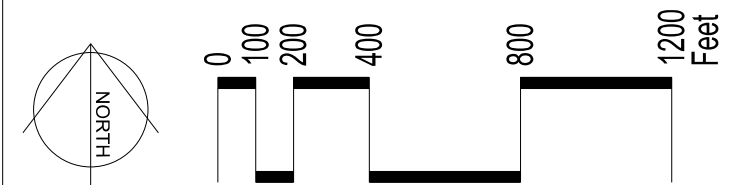


**NOTES:**

1. Property boundary survey by: DDC Engineers, Inc., Myrtle Beach, SC, dated June 8, 2016.
2. Topographic and planometric data from U.S.G.S. and Aerial photo maps, obtained from Terrain Navigator Pro.
3. All information and dimensions should be verified for accuracy in the field.
4. This is a conceptual development plan and is subject to change. It is a graphical representation for one possible development scheme for the subject property. There is no representation that this property will be developed as shown on this plan.

**LEGEND:**

-  Subject Property  
225.50± acres
-  Building Zone  
@ 13.84± acres
-  Building Area - Community Recreation Facility  
@ 1.5± acres
-  Building Areas  
@ 1.5± acres
-  100' Wetland Buffer



Revised: 06.21.2016 JP

**OCEAN GROVE RESORT**

HORRY COUNTY, SOUTH CAROLINA

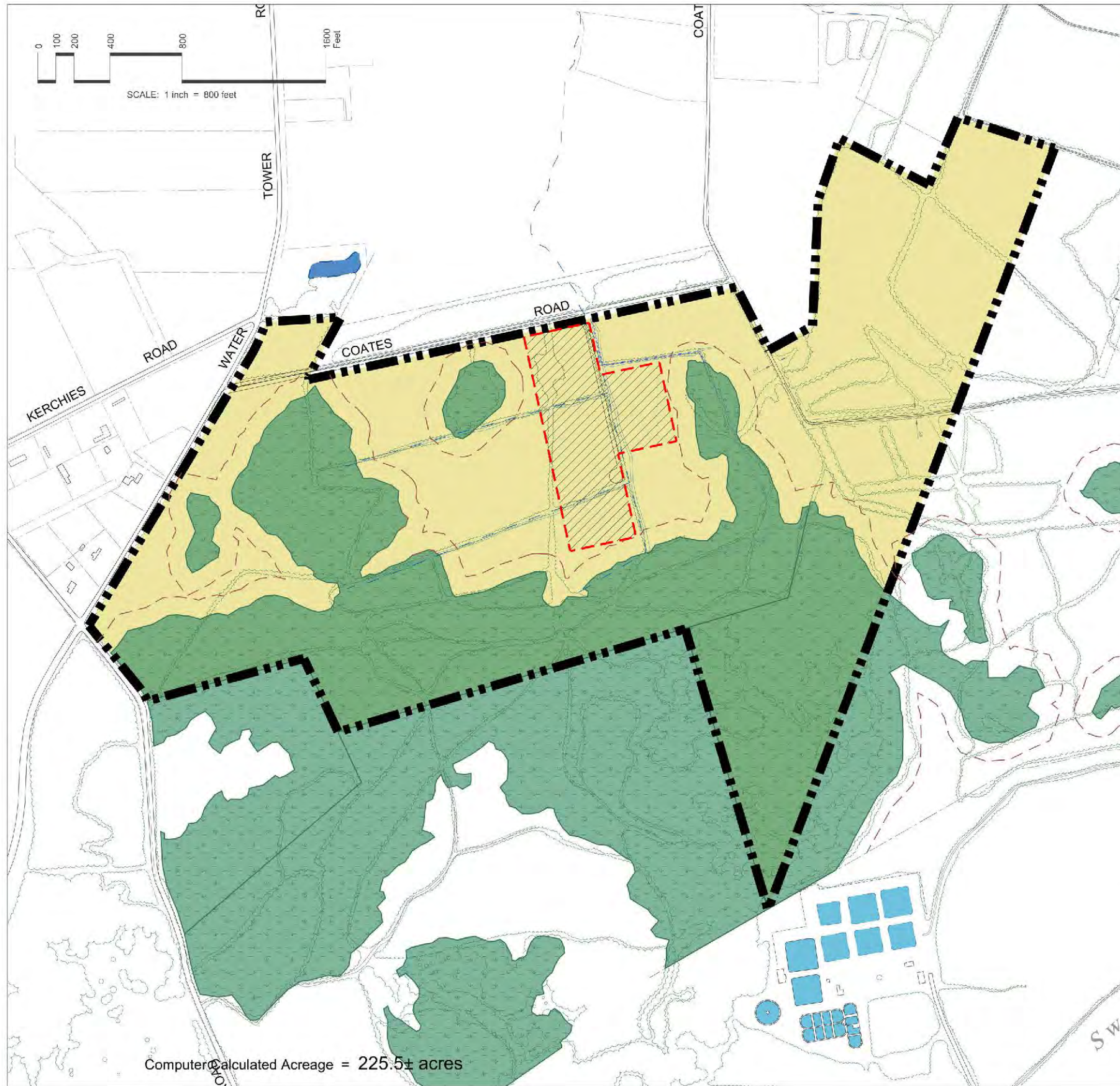
Lands Held For Investment

**CONCEPT PLAN**

*Jeff Pate Design*  
conservation planning & design  
golf community & residential land planning





1119 Sunset Lane, Gulf Breeze, FL 32563 e: jeffpate@bellsouth.net p: (205) 527-1227





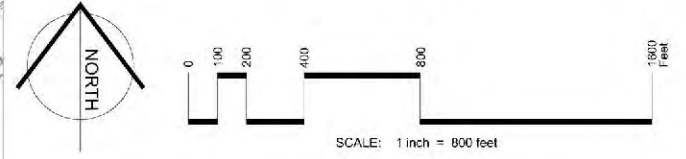
Computer Calculated Acreage = 225.5± acres

**LEGEND:**

-  Conservation Area - 225.5± acres
-  Wetlands
-  Wetland and Riparian Protection Area
-  Building Zone - 13.84± acres

**NOTES:**

1. Property boundaries from DDC Engineers, Myrtle Beach, SC; dated May 6, 2016.
2. Aerial Photography from Apollo Mapping; dated January 18, 2016.
3. Topography from DEM - 2foot contour intervals.
4. Soils information from USDA - NRCS National Soil Information System (NASIS) Database.
5. Wetland delineation from Jurisdictional Wetlands.
6. Floodplain information - Zone X per FEMA Map Panels 45051C0580J & 45041C0578H.

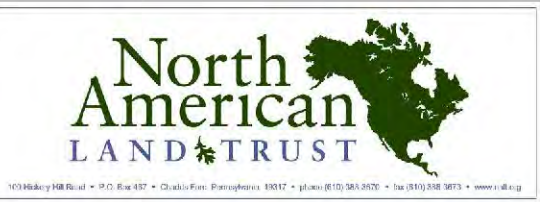


CONSERVATION EASEMENT PLAN

**OCEAN GROVE RESORT**  
 Horry County, South Carolina

**CONSERVATION EASEMENT PLAN**

DATE: 05/22/2016  
 PROJECT: 13.2.2016  
 SCALE: 1" = 800'  
 SHEET: 1 of 1



103 Hickory Hill Road • P.O. Box 487 • Charles Fort, Pennsylvania 15017 • phone (610) 383-3570 • fax (610) 338-3673 • www.natl.org