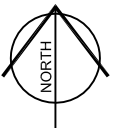


LEGEND

-  Approximate Location of Property

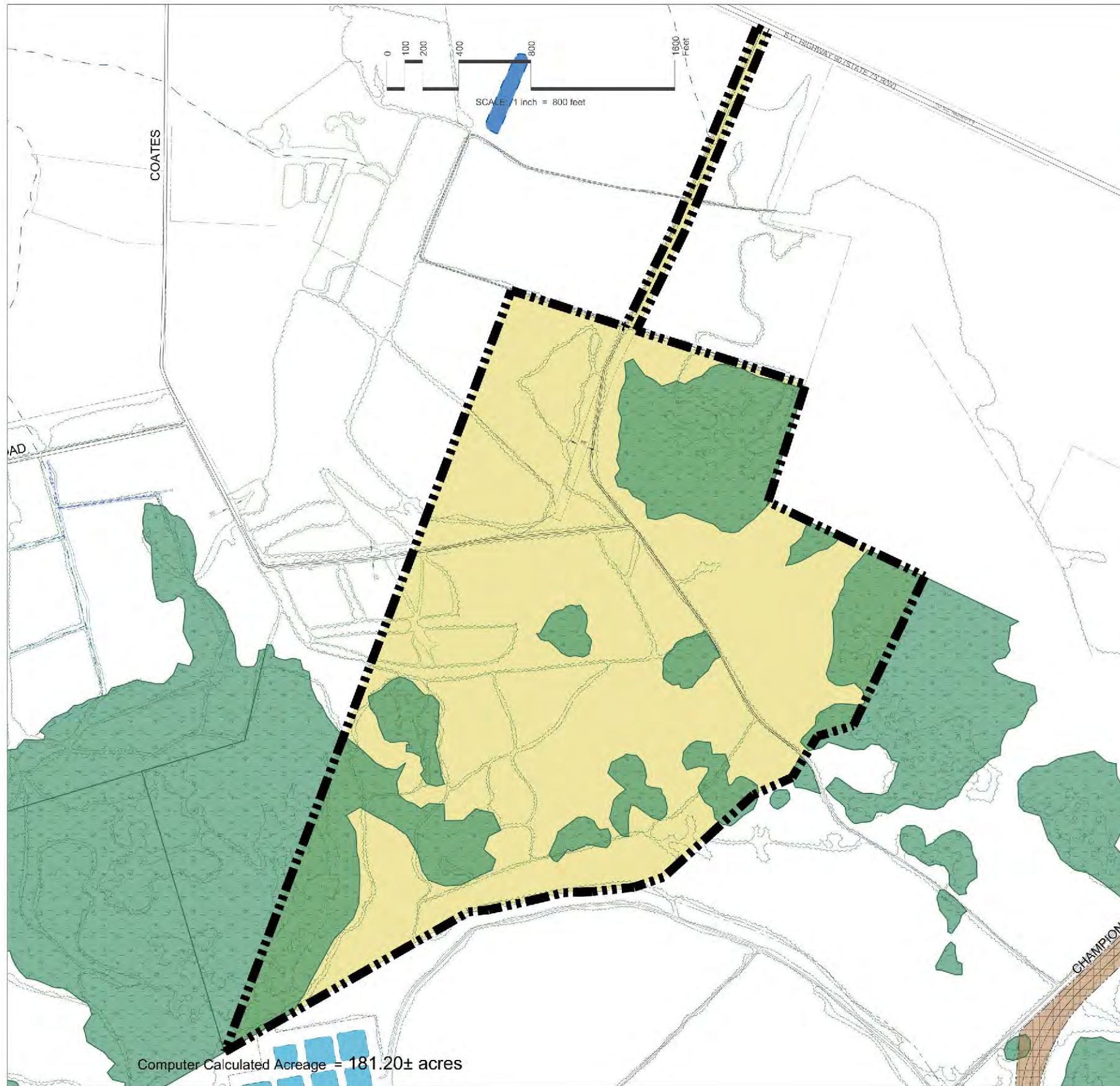


WHITE SANDS VILLAGE



Horry County,
South Carolina

LOCATION MAP



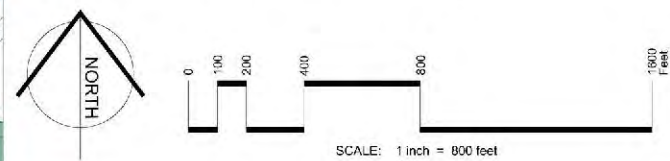


LEGEND:

-  Subject Property - 181.20± acres
-  Wetlands

NOTES:

1. Property boundaries from DDC Engineers, Myrtle Beach, SC; dated May 6, 2016.
2. Aerial Photography from Apollo Mapping; dated January 18, 2016.
3. Topography from DEM - 2foot contour intervals.
4. Soils information from USDA - NRCS National Soil Information System (NASIS) Database.
5. Wetland delineation from Jurisdictional Wetlands.
6. Floodplain information - Zone X per FEMA Map Panels 45051C0580J & 45041C0578H.



WHITE SANDS VILLAGE

HORRY COUNTY, SOUTH CAROLINA

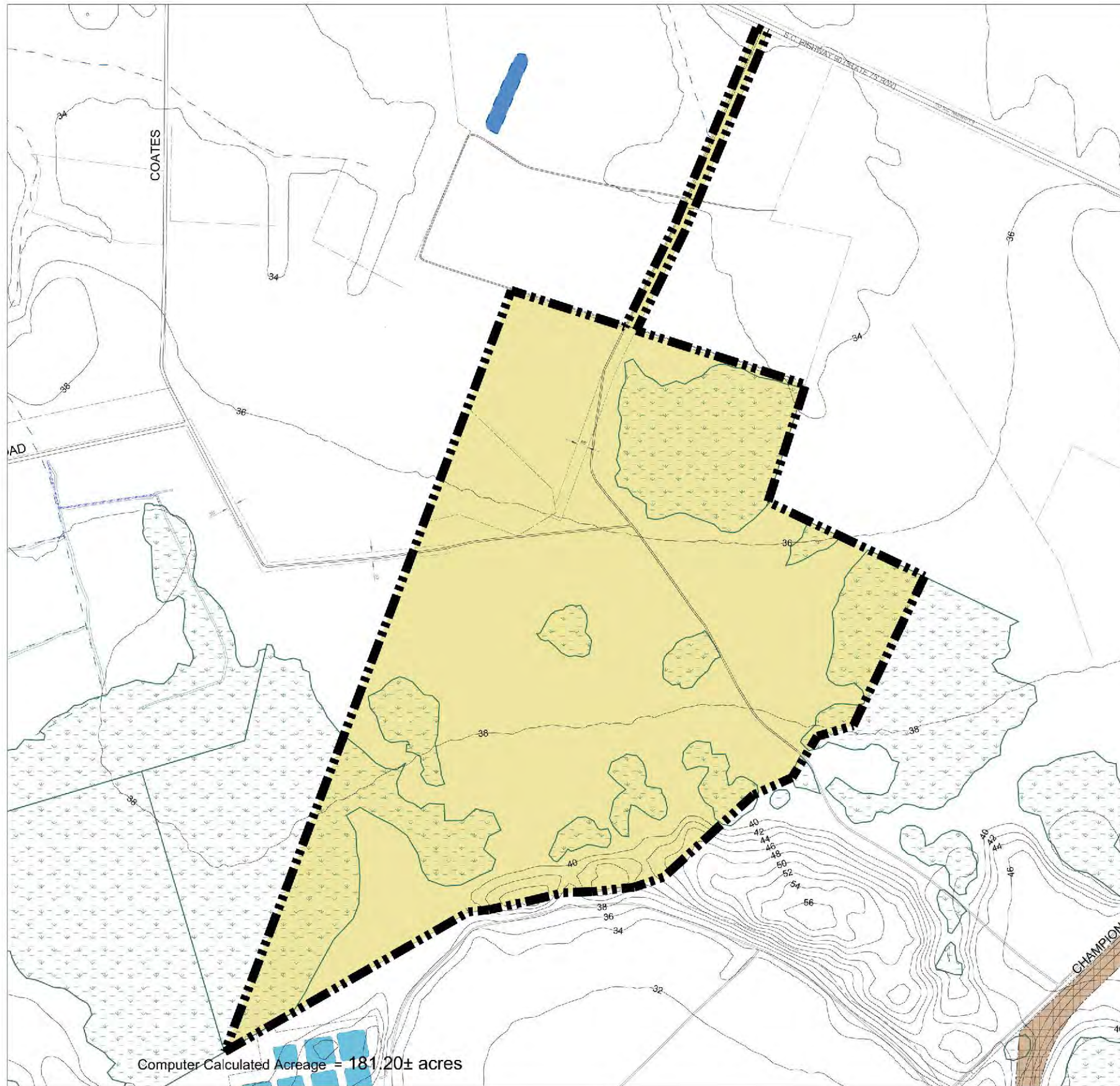
BASE MAP

DATE: MAY 6, 2016
 PROJECT: 12.12.16.11.01
 SCALE: 1" = 800' N.D.





103 Hickory Hill Road • P.O. Box 417 • Charles Fort, Pennsylvania 15017 • phone (610) 384-3670 • fax (610) 338-3673 • www.natl.org

BASE MAP



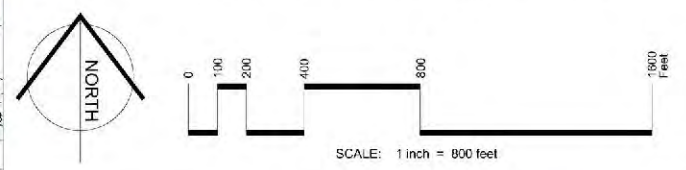
Computer Calculated Acreage = 181.20± acres

LEGEND:

-  Subject Property - 181.20± acres
-  Wetlands

NOTES:

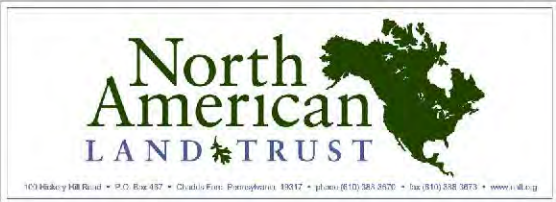
1. Property boundaries from DDC Engineers, Myrtle Beach, SC; dated May 6, 2016.
2. Aerial Photography from Apollo Mapping; dated January 18, 2016.
3. Topography from DEM - 2foot contour intervals.
4. Soils information from USDA - NRCS National Soil Information System (NASIS) Database.
5. Wetland delineation from Jurisdictional Wetlands.
6. Floodplain information - Zone X per FEMA Map Panels 45051C0580J & 45041C0578H.



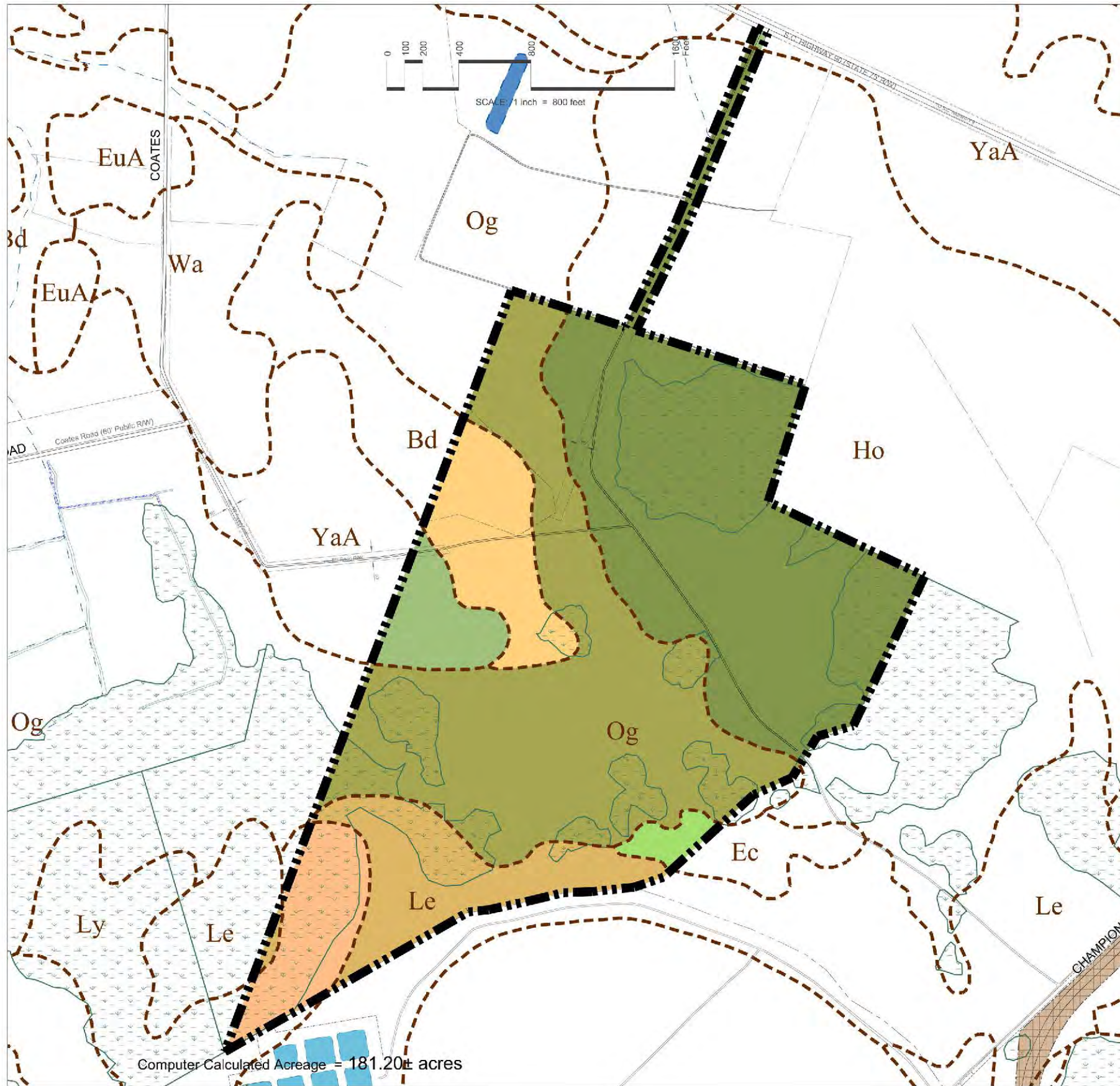
WHITE SANDS VILLAGE
 Horry County, South Carolina

TOPOGRAPHY



DATE: 05/18/2016
 PROJECT: 12.2.2016
 SCALE: 1" = 800'



TOPOGRAPHY



LEGEND:

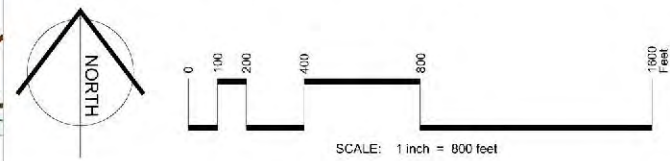
-  Subject Property - 181.20± acres
-  Wetlands

SOIL LEGEND:

-  Bd Bladen Fine Sandy Loam ** ^
-  Ec Echaw Sand
-  Ho Hobcaw Fine Sandy Loam ** ^
-  Le Leon Fine Sand ^
-  Ly Lynn Haven Sand ^
-  Og Ogeechee Loamy Fine Sand ** ^
-  YaA Yauhannah Fine Sandy Loam *** ^
0 to 2% slopes

Soil Notes:
 *** denotes Prime Farmland
 ** denotes Farmland of Statewide Importance
 ^ denotes Hydric Soils

- NOTES:**
1. Property boundaries from DDC Engineers, Myrtle Beach, SC; dated May 6, 2016.
 2. Aerial Photography from Apollo Mapping; dated January 18, 2016.
 3. Topography from DEM - 2foot contour intervals.
 4. Soils information from USDA - NRCS National Soil Information System (NASIS) Database.
 5. Wetland delineation from Jurisdictional Wetlands.
 6. Floodplain information - Zone X per FEMA Map Panels 45051C0580J & 45041C0578H.



Computer Calculated Acreage = 181.20± acres

WHITE SANDS VILLAGE

HORRY COUNTY, SOUTH CAROLINA

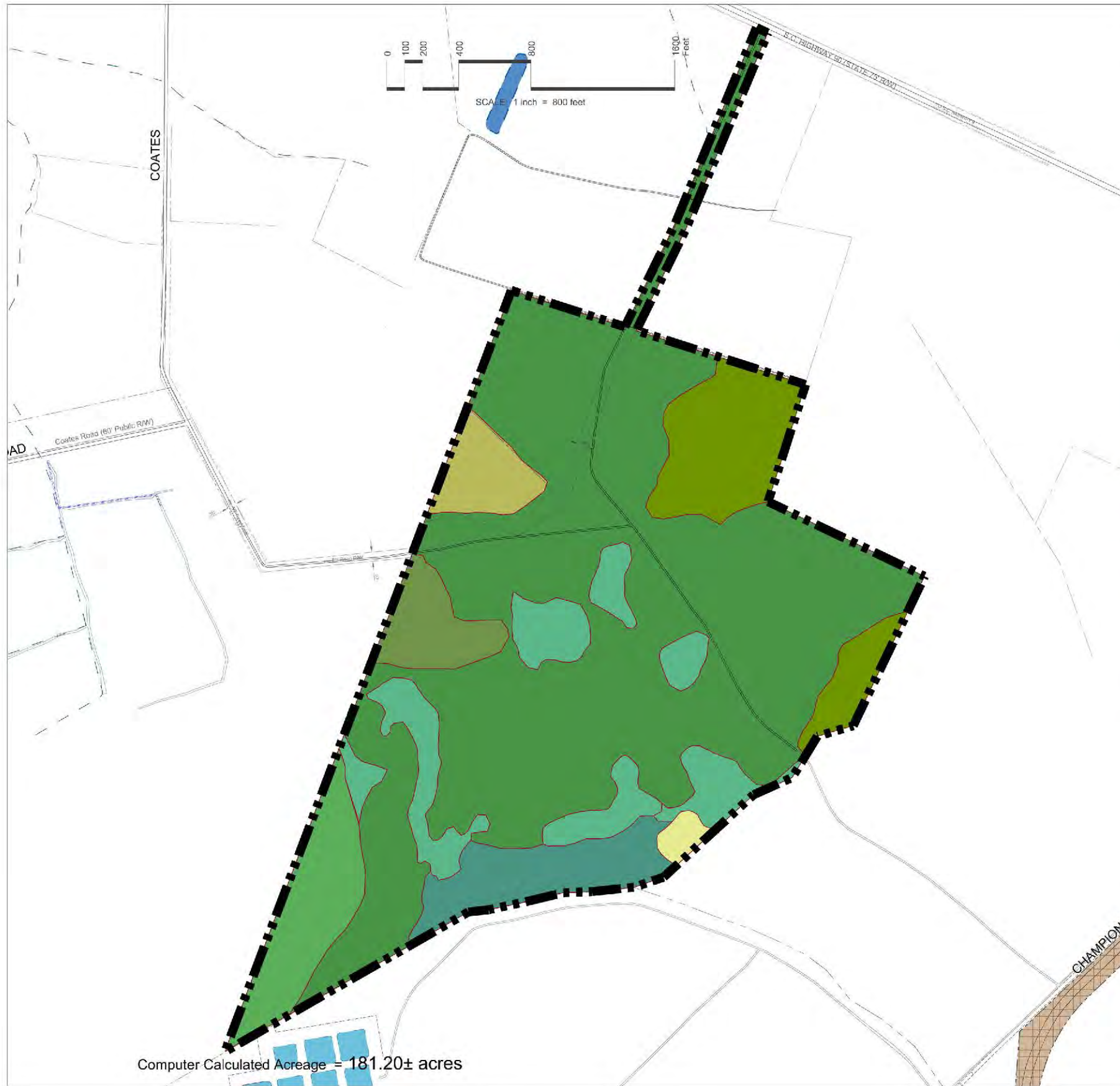
SOILS MAP

BASE MAP © 2016
 PRINTED 12.2.2016
 DATE MAP CREATED 4.10




103 Highway 98 Road • P.O. Box 487 • Charleston, Pennsylvania 15017 • phone (610) 384-3670 • fax (610) 338-3673 • www.natl.org









SOILS MAP



LEGEND:

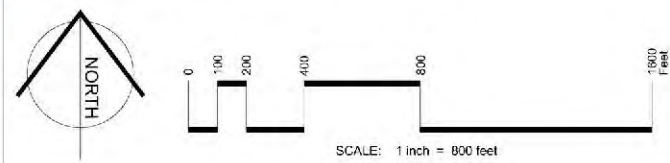
 Subject Property - 181.20± acres

VEGETATION LEGEND:

-  Bay Forest (Rhododendron viscosum) component
-  Cypress Swamp
-  Depressional Wetland
-  Graminoid Dominated Wetland
-  Pine Plantation
-  Recent Cut Over Pineland
-  Sandhill Fringe
-  Young Dense Pine

NOTES:

1. Property boundaries from DDC Engineers, Myrtle Beach, SC; dated May 6, 2016.
2. Aerial Photography from Apollo Mapping; dated January 18, 2016.
3. Topography from DEM - 2foot contour intervals.
4. Soils information from USDA - NRCS National Soil Information System (NASIS) Database.
5. Wetland delineation from Jurisdictional Wetlands.
6. Floodplain information - Zone X per FEMA Map Panels 45051C0580J & 45041C0578H.



WHITE SANDS VILLAGE

HORRY COUNTY, SOUTH CAROLINA

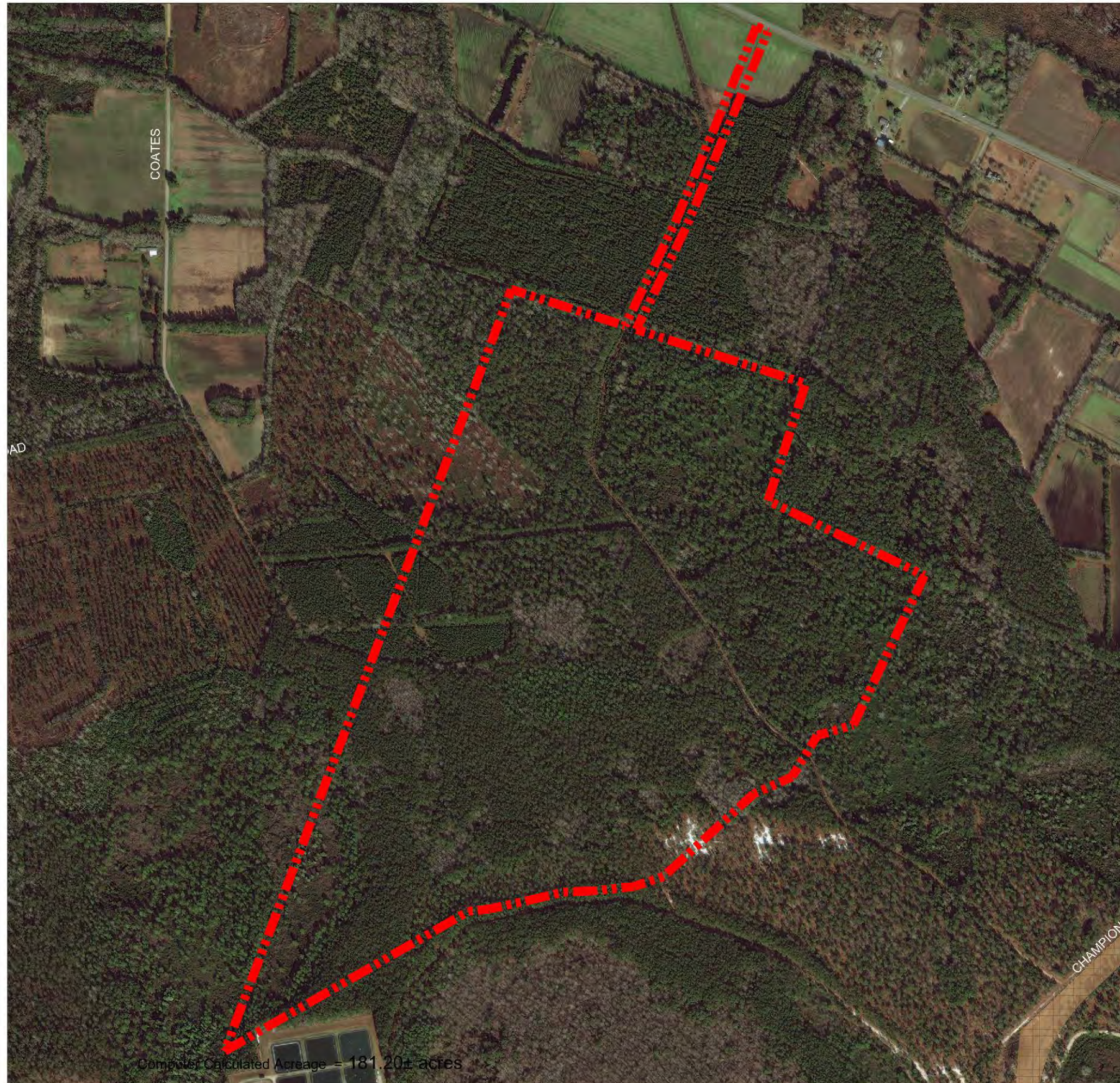
VEGETATION MAP

DATE: 05/11/16
 PROJECT: 16-0001-001
 SCALE: 1" = 800'
 VRS: 05/11/16




10300 Highway 98 Road • P.O. Box 437 • Charleston, Pennsylvania 15017 • phone (610) 384-0570 • fax (610) 338-3873 • www.natl.org

VEGETATION MAP

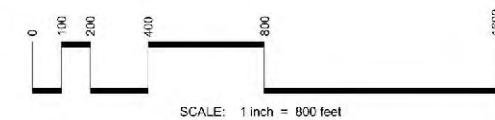


LEGEND:

 Subject Property - 181.20± acres

NOTES:

1. Property boundaries from DDC Engineers, Myrtle Beach, SC; dated May 6, 2016.
2. Aerial Photography from Apollo Mapping; dated January 18, 2016.
3. Topography from DEM - 2foot contour intervals.
4. Soils information from USDA - NRCS National Soil Information System (NASIS) Database.
5. Wetland delineation from Jurisdictional Wetlands.
6. Floodplain information - Zone X per FEMA Map Panels 45051C0580J & 45041C0578H.



WHITE SANDS VILLAGE

HORRY COUNTY, SOUTH CAROLINA

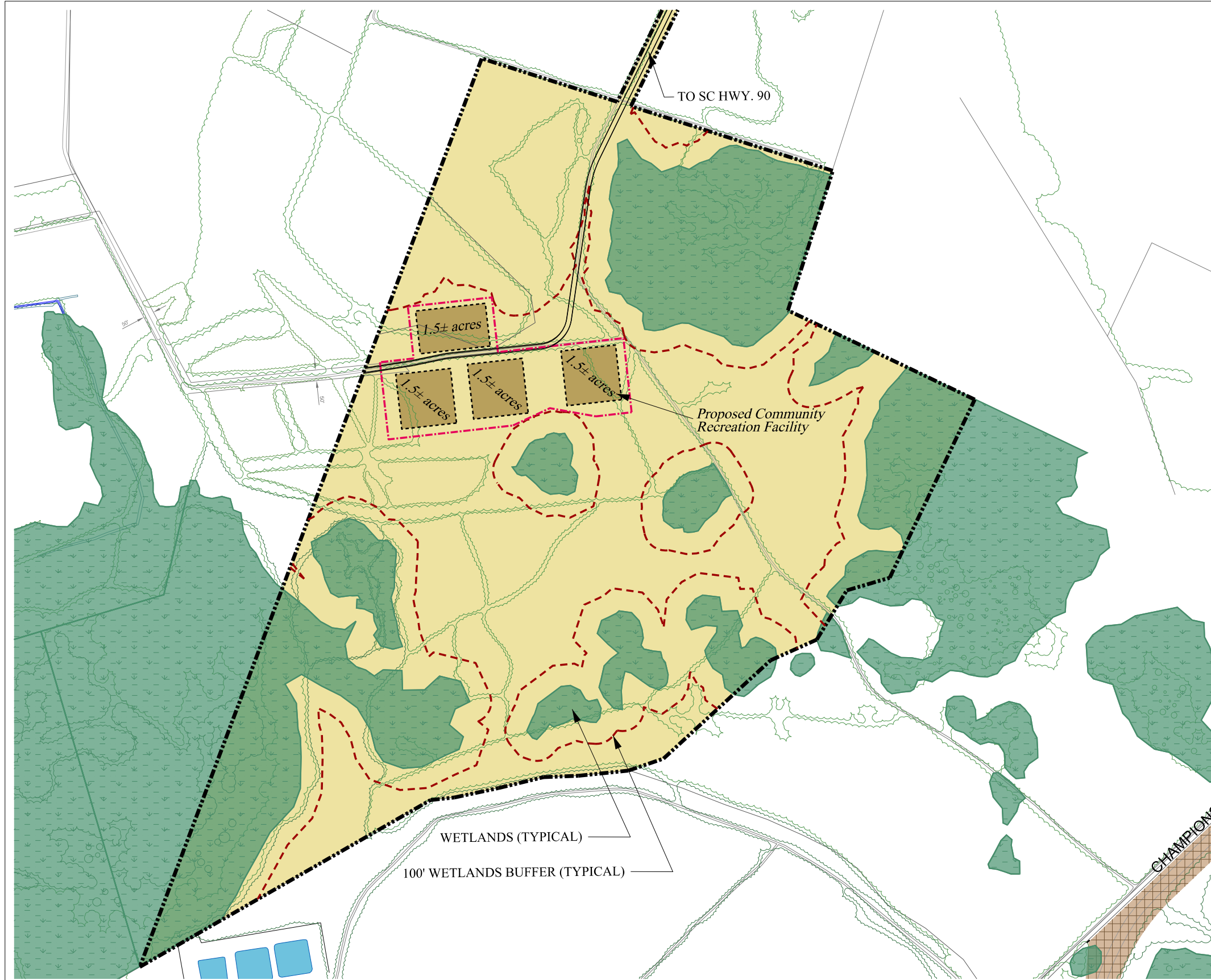
AERIAL PHOTOGRAPH

DATE: 05/18/2016
 PROJECT: 181.20± ACRES
 DRAWN BY: JACQUES W. JO



103 Highway 98 Road • P.O. Box 487 • Chubb's Cove, Pennsylvania 19017 • phone (610) 384-3872 • fax (610) 338-3873 • www.natl.org






AERIAL PHOTOGRAPH

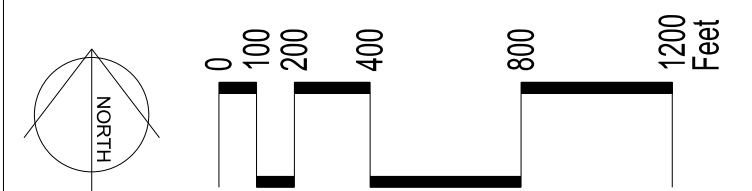


NOTES:

1. Property boundary survey by: DDC Engineers, Inc., Myrtle Beach, SC, dated June 8, 2016.
2. Topographic and planometric data from U.S.G.S. and Aerial photo maps, obtained from Terrain Navigator Pro.
3. All information and dimensions should be verified for accuracy in the field.
4. This is a conceptual development plan and is subject to change. It is a graphical representation for one possible development scheme for the subject property. There is no representation that this property will be developed as shown on this plan.

LEGEND:

-  Subject Property
181.20± acres
-  Building Zone
@ 11.17± acres
-  Building Area - Community Recreation Facility
@ 1.5± acres
-  Building Areas
@ 1.5± acres
-  100' Wetland Buffer



Revised: 06.21.2016 JP

WHITE SANDS VILLAGE

HORRY COUNTY, SOUTH CAROLINA

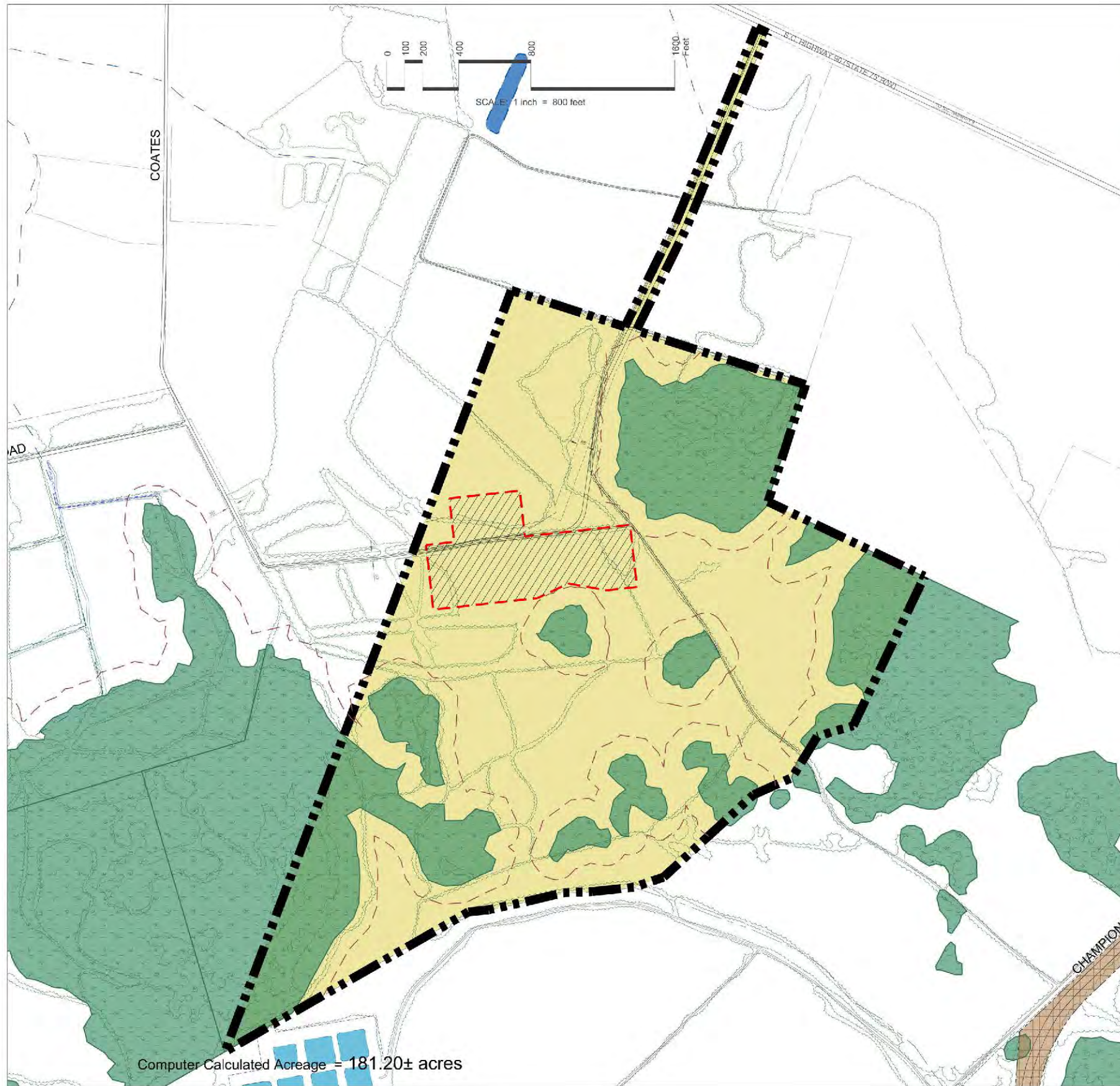
Lands Held For Investment

CONCEPT PLAN




Jeff Pate Design
conservation planning & design
golf community & residential land planning

1119 Sunset Lane, Gulf Breeze, FL 32563 e: jeffpate@bellsouth.net p: (251) 527-1227

CONCEPT PLAN

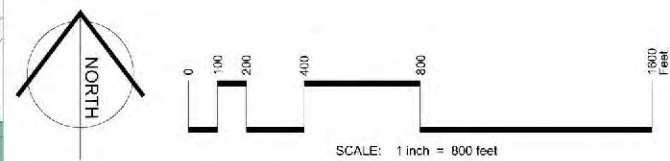


LEGEND:

-  Conservation Area - 181.20± acres
-  Wetlands
-  Wetland and Riparian Protection Area
-  Building Zone - 11.17± acres

NOTES:

1. Property boundaries from DDC Engineers, Myrtle Beach, SC; dated May 6, 2016.
2. Aerial Photography from Apollo Mapping; dated January 18, 2016.
3. Topography from DEM - 2foot contour intervals.
4. Soils information from USDA - NRCS National Soil Information System (NASIS) Database.
5. Wetland delineation from Jurisdictional Wetlands.
6. Floodplain information - Zone X per FEMA Map Panels 45051C0580J & 45041C0578H.



CONSERVATION EASEMENT PLAN

WHITE SANDS VILLAGE

HORRY COUNTY, SOUTH CAROLINA

CONSERVATION EASEMENT PLAN

DATE: 05/22/2016
 PROJECT: 12.2.2016
 SCALE: 1" = 800'
 SHEET: 1 OF 1



103 Hickory Hill Road • P.O. Box 487 • Charles Fort, Pennsylvania 15017 • phone (810) 384-2670 • fax (810) 338-3873 • www.natl.org